

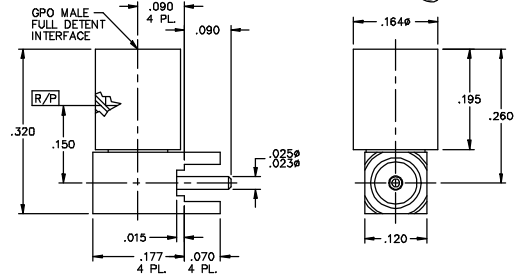
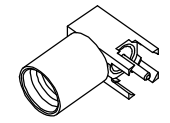
DATE REVISED: 10/16/00

CATALOG NUMBER

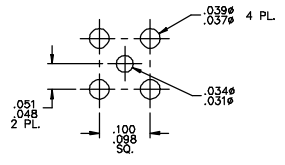
0119-899-3

MATERIAL AND FINISH

SHROUD: CRES 303; PASSIVATED  
R/A HOUSING AND BeCu; GOLD PLATE 50-100 ? INCHES  
R/A CONTACT: OVER NICKEL PLATE 50 ? INCHES MIN.  
DIELECTRICS: VIRGIN PTFE (TEFLON)



RECOMMENDED MOUNTING HOLES



GPO MALE FULL DETENT  
R/A TO P.C.B.

IDENT CODE:  
B2316

REVISION: B

GILBERT  
ENGINEERING

SOURCE FILE: MECR# 1371

DWG. NO.:

OL-0119-899-3

ASSY. PROC.:

-